

---

---

---

**GARDNER DENVER®**

3-1-535  
Version 3  
DECEMBER 2008

**TRIPLEX PISTON PUMP**

**5" STROKE**

**MODEL  
THE**

**4" to 5.5" PISTON SIZE  
HORIZONTAL  
HEAVY DUTY PUMP**

**PARTS LIST**

**Gardner**  

---

**Denver**

**MAINTAIN PUMP RELIABILITY AND PERFORMANCE  
WITH GENUINE GARDNER DENVER®  
PARTS AND SUPPORT SERVICES**

Gardner Denver® genuine pump parts are manufactured to design tolerances and are developed for optimum dependability. Design and material innovations are the result of years of experience with hundreds of different pump applications. Reliability in materials and quality assurance are incorporated in our genuine replacement parts.

**Your authorized Gardner Denver distributor offers all the backup you'll need.** A worldwide network of authorized distributors provides the finest product support in the pump industry. Your local authorized distributor maintains a large inventory of genuine parts and he is backed up for emergency parts issues with access to Oklahoma City, OK. and the factory in Quincy, IL.

Your authorized distributor can support all your Gardner Denver pump needs.

Trained parts specialists are available to assist you in selecting the correct replacement parts.

**ALL ORDERS for PARTS should be placed with the NEAREST Authorized Distributor.**

To find your nearest distributor you may use one of the following choices:

\* Log onto the Gardner Denver web site: [www.gardnerdenver.com](http://www.gardnerdenver.com)

\* Send an E-Mail request to: [pumps@gardnerdenver.com](mailto:pumps@gardnerdenver.com)

\* Contact one of our sales offices listed below.

**The Gardner Denver Sales Offices are located as follows:**

**DOMESTIC**

Gardner Denver  
2200 South Prospect  
Oklahoma City, OK. 73129

Phone: (405) 677-5736

Fax: (405) 677-5807

**INTERNATIONAL**

Gardner Denver  
1800 Gardner Expressway  
Quincy, IL 62301

Phone: (217) 222-5400

Fax: (217) 223-1581

**INSTRUCTIONS FOR ORDERING REPAIR PARTS:**

When ordering parts, specify Pump MODEL and SERIAL NUMBER (see nameplate on unit). The Serial Number is also stamped on top of the frame at the connecting end. (Between the cradle opening and the fluid cylinder)

**SPECIFY THE NUMBER OF PARTS REQUIRED, EXACTLY.**

**DO NOT ORDER BY SETS OR GROUPS.**

To determine the Right Hand and Left-Hand side of a pump, stand at the power end and look toward the fluid end. Right Hand and Left Hand are indicated in parenthesis following the part name, i.e. (RH) and (LH), when appropriate.

**For Operating and Service Instructions see:**

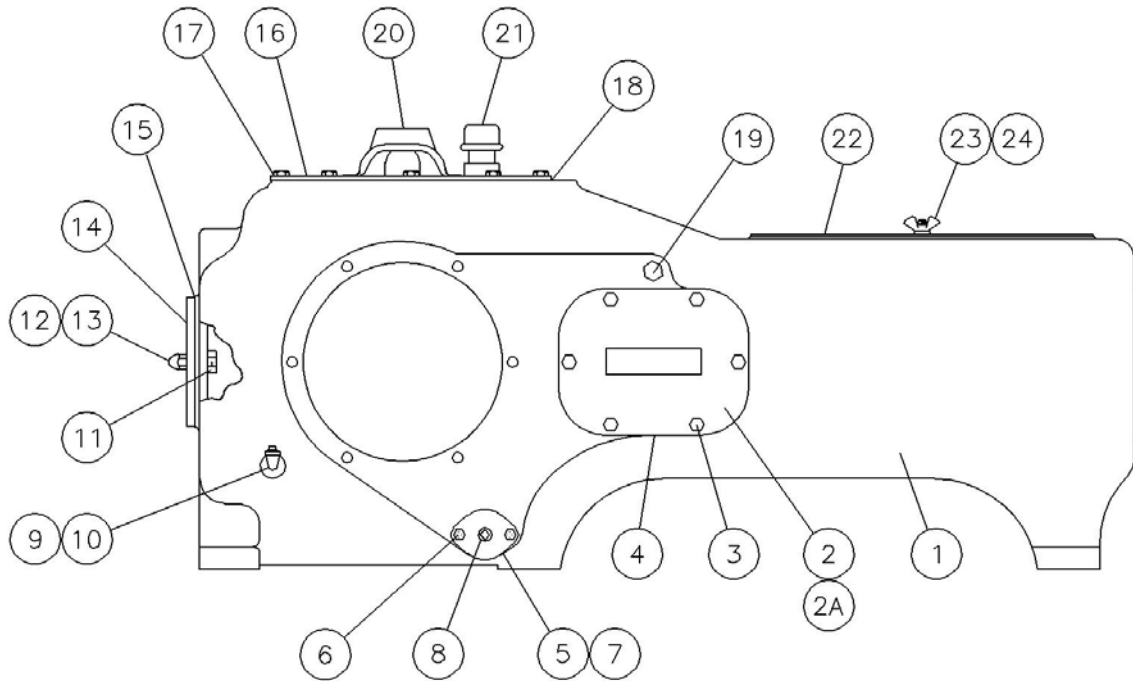
**SERVICE MANUAL 3-1-616**

## TABLE OF CONTENTS

Maintain Pump Reliability And Performance .....	i
Instructions For Ordering Repair Parts .....	i
Table of Contents .....	ii
Frame Group .....	1
Lubrication Piping .....	2
Crosshead & Oil Stop Head Group .....	3
Eccentric, Shaft & Bearing Group - Splined Drive Shaft, Flanged Gearbox Mount .....	4
Eccentric, Shaft & Bearing Group - Keyed Drive Shaft, Standard Bearing Carrier .....	5
Connecting Rod .....	6
Crosshead Lubrication Piping - Swivel Mounted on the RH Side .....	7
Crosshead Lubrication Piping - Swivel Mounted on the LH Side .....	8
Rod Wash System .....	9
Fluid Cylinder Assembly - Cast Nodular Iron .....	10
Fluid Cylinder Assembly - Block Steel * .....	11
Piston Rod Assembly .....	12
Suction And Discharge Valves / Valve Puller Equipment .....	13
Flanges - Suction and Discharge .....	14
GARDNER DENVER Pump Unit Record .....	Inside Back Cover

\* Applies ONLY to Serial Order Numbers Lower Than Q004740.

Order by Part Number and Description. Reference Numbers are shown for your convenience only.

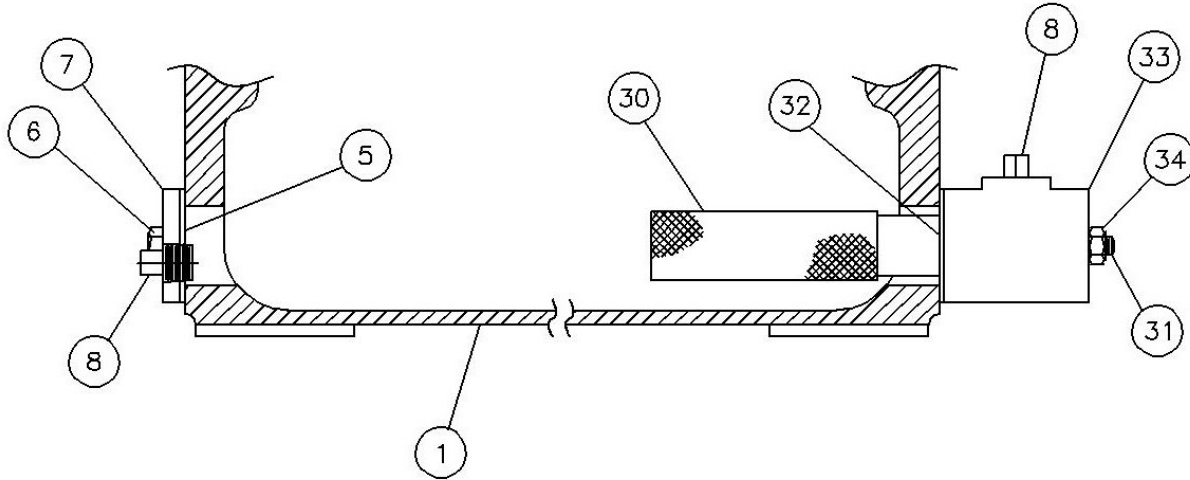


(Ref. Drawing No. 301TEE810)

### FRAME GROUP

Ref. No.	Description	Qty.	Part No.
1	FRAME (POWER END) .....	1	302TEE001
2	INSPECTION PLATE, With Oil Manifold (Crosshead).....	1	301TEE052
2A	INSPECTION PLATE (Crosshead) .....	1	302TEE052
3	SCREW .....	12	75A136
4	GASKET .....	2	25C1941
5	GASKET .....	2	25C157N
6	SCREW .....	4	655ED030
7	FLANGE .....	2	29AUX27
8	PLUG.....	2	64AA7
9	PLUG.....	2	64AA5
10	PIPE ELBOW .....	2	64D2
11	RETAINER PLATE.....	1	PE1400
12	ACORN NUT .....	3	50Q14
13	COPPER GASKET.....	3	25F44
14	INSPECTION PLATE (Frame End).....	1	200TEE052
15	GASKET .....	1	200TEE715
16	HOOD.....	1	201TEE053
17	SCREW .....	12	75A136
18	GASKET .....	1	201TEE715
19	PLUG (Opposite Side).....	2	64B3
20	LIFTING EYE .....	2	200TEE263
21	BREATHER.....	1	5C7
22	INSPECTION PLATE (Cradle Cover) .....	1	300TEE052
23	STUD.....	2	79A466
24	WING NUT .....	2	50H1

Order by Part Number and Description. Reference Numbers are shown for your convenience only.

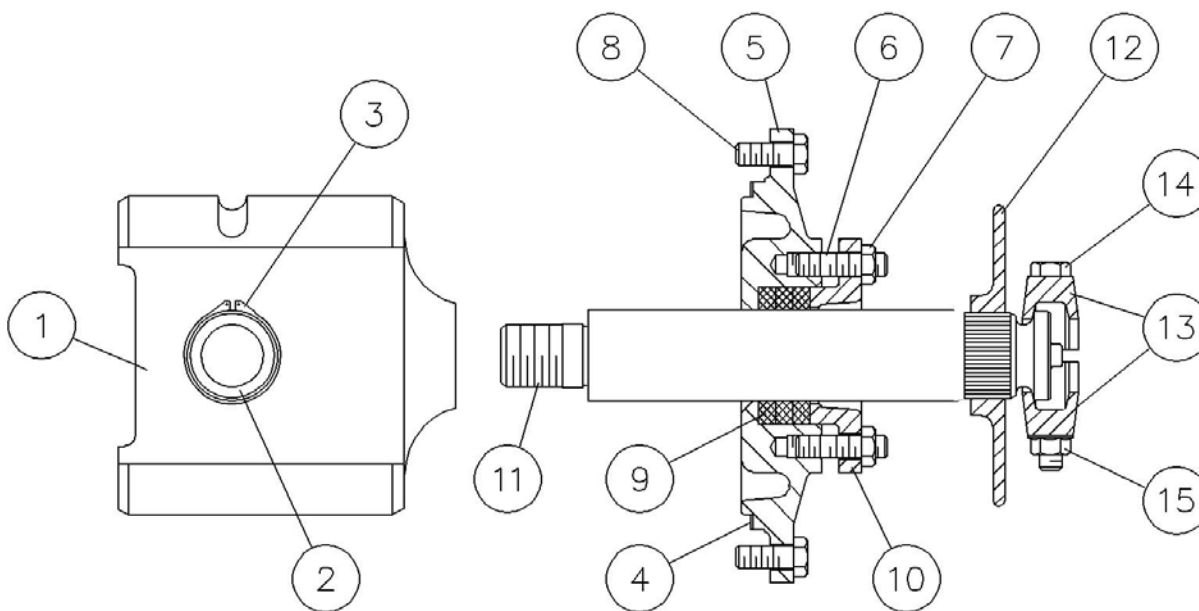


(Ref. Drawing No. 300THE810)

### LUBRICATION PIPING

Ref. No.	Description	Qty.	Part No.
1	FRAME (Power End).....	1	302TEE001
5	GASKET .....	1	25C157N
6	SCREW .....	2	655ED030
7	FLANGE .....	1	29AUX27
8	PLUG.....	2	64AA7
30	SCREEN-OIL .....	1	2WAJ511
31	STUD (Connector to Frame) .....	2	79A204
32	GASKET .....	1	25C157N
33	CONNECTOR .....	1	200PEE284
34	NUT .....	2	50B3

Order by Part Number and Description. Reference Numbers are shown for your convenience only.

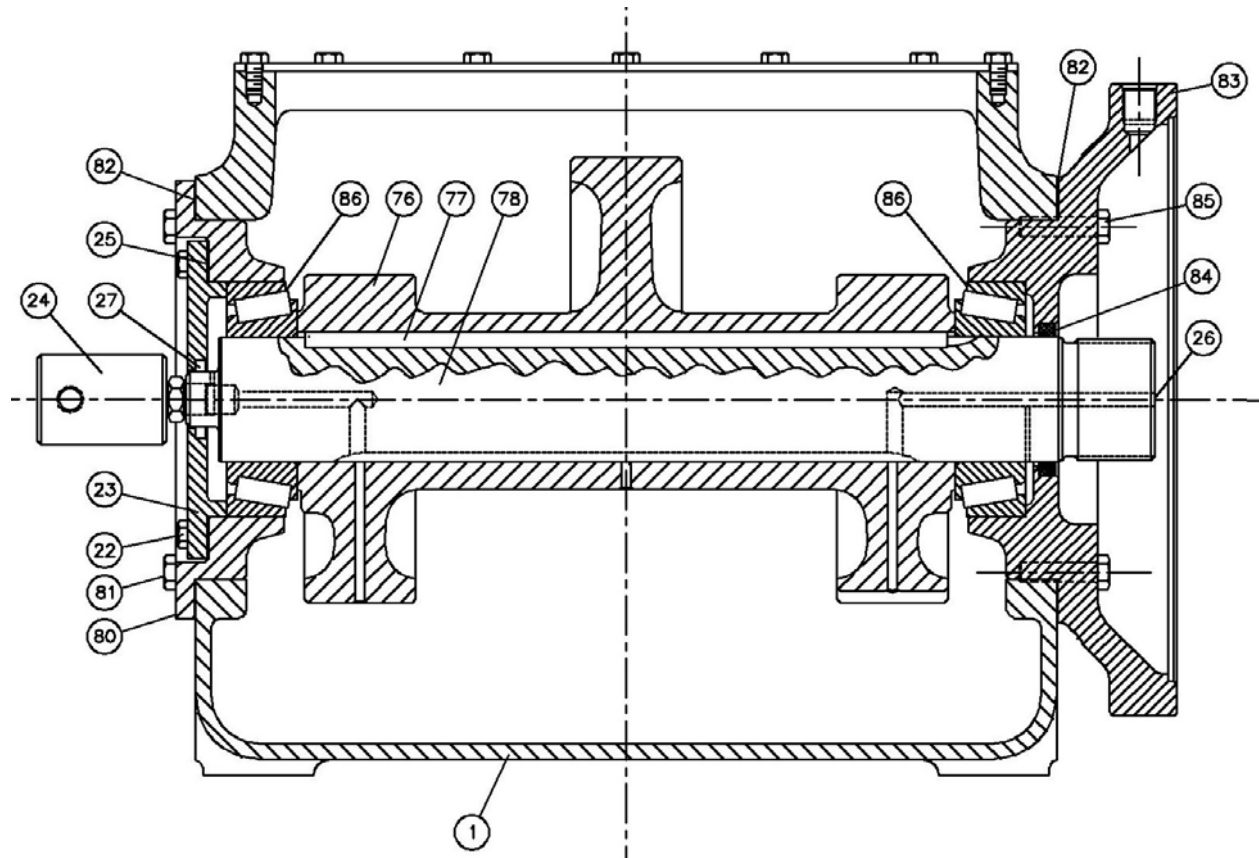


(Ref. Drawing No. 300TEE810-B)

### CROSSHEAD & OIL STOP HEAD GROUP

Ref No.	Description	Qty.	Part No.
1	CROSSHEAD (Standard Size) .....	3	300TEE005
	CROSSHEAD (0.125" Oversized – Optional) .....	3	301TEE005
2	CROSSHEAD PIN.....	3	2005051
3	RING, Crosshead Pin Retainer.....	6	65W19
4	GASKET, Oil Stop Head to Frame.....	3	25C1948
	OIL STOP HEAD ASSEMBLY, Includes Ref No's 5, 6 & 7.....	3	PE226A
5	OIL STOP HEAD.....	3	PE226
6	STUD, Gland.....	6	79A238
7	NUT, Gland.....	6	50F5
8	SCREW, Oil Stop Head to Frame.....	12	655EE050
9	PACKING, Oil Stop Head.....	3	60DD99
10	GLAND, Oil Stop Head.....	3	PE238
11	ROD-EXTENSION.....	3	300TEE839
12	BAFFLE, Piston Rod.....	3	200TAE840
	PLUNGER COUPLING ASSEMBLY, Includes Ref No's 14 & 15.	3	201TAE092A
13	PLUNGER COUPLING ASSEMBLY, Includes Ref No's 14 & 15.	3	201TAE092A
14	SCREW, Coupling.....	6	655EE17S
15	NUT, Coupling.....	6	50AW35
	<b>The one-piece combination crosshead/extension rod on models prior to serial number 917132 is no longer offered and must be replaced with the two-piece crosshead/extension rod, available in the following conversion kit.</b>		
	CONVERSION KIT (Includes items 1, 11 and 12).....	3	300TEE6005
	EXTENSION ROD BAFFLE (Required).....	3	PE840
	CONVERSION KIT - OVERSIZED CROSSHEAD.....	3	301TEE6005
	(Includes items 11, 12 and P/N 301TEE005 oversized crosshead)		
	EXTENSION ROD BAFFLE (Required).....	3	PE840

Order by Part Number and Description. Reference Numbers are shown for your convenience only.

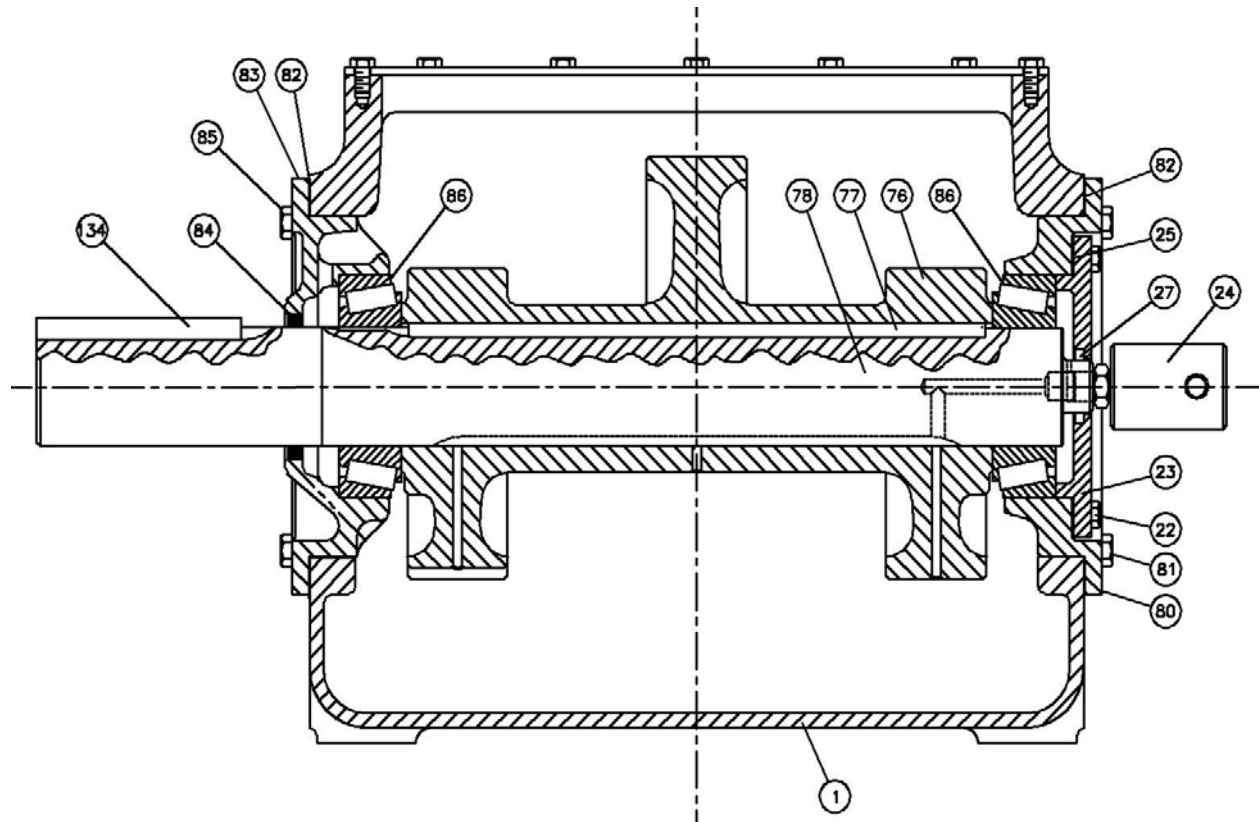


(Ref. Drawing No. 316TEE810)

**ECCENTRIC, SHAFT & BEARING GROUP  
SPLINED DRIVE SHAFT – FLANGED GEARBOX MOUNT**

Ref. No.	Description	Qty.	Part No.
23	CARRIER .....	1	300TEE1148
24	ROTARY UNION.....	1	300TEE586
25	SHIM .....	2	77H106
26	PLUG.....	1	64B35
27	SEAL OIL .....	1	901SH02-13
76	ECCENTRIC .....	1	300TEE255
77	KEY .....	1	300TEE062
78	SHAFT (Splined) .....	1	300TEE050
79	SCREW.....	6	75AA1
80	BEARING HOUSING .....	1	301TEE006
81	SCREW.....	6	655EF050
82	GASKET .....	2	25C1945
83	BEARING HOUSING .....	1	300TEE006
84	OIL SEAL .....	1	60G63
85	SCREW.....	6	655EF098
86	BEARING .....	2	12BA64

Order by Part Number and Description. Reference Numbers are shown for your convenience only.



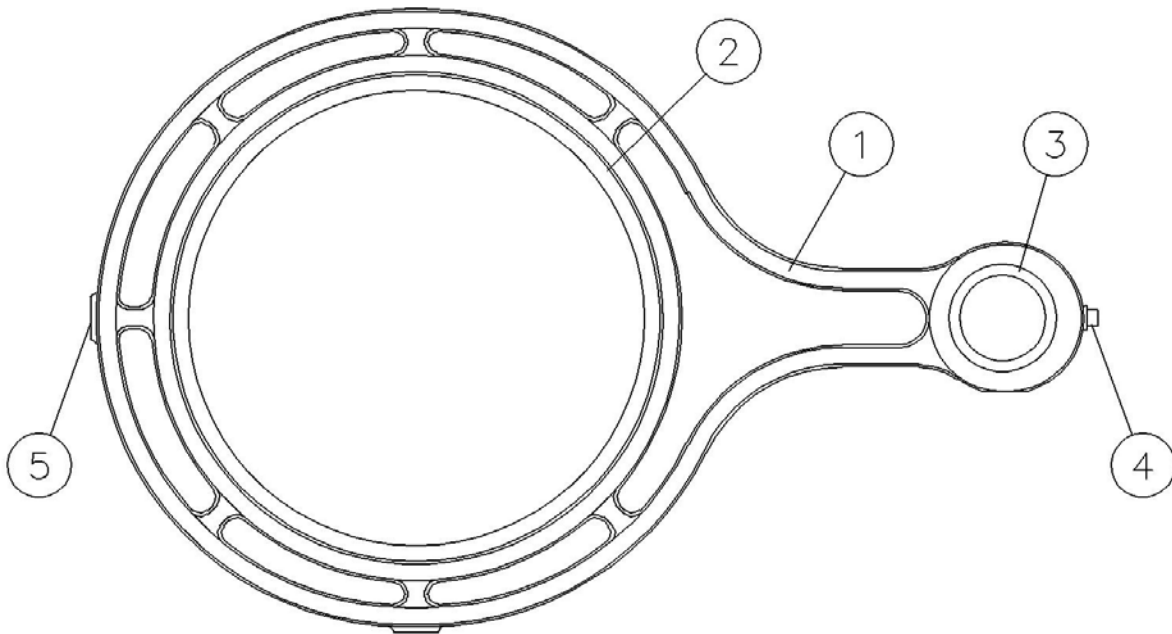
(Ref. Drawing No. 321TEE810)

**ECCENTRIC, SHAFT & BEARING GROUP  
KEYED DRIVE SHAFT – STANDARD BEARING CARRIER**

Ref. No.	Description	Qty.	Part No.
23	CARRIER .....	1	300TEE1148
24	ROTARY UNION.....	1	300TEE586
25	SHIM .....	2	77H106
26	PLUG.....	1	64B35
27	OIL SEAL .....	1	901SH02-13
76	ECCENTRIC .....	1	300TEE255
77	KEY .....	1	300TEE062
78	SHAFT (Keyed).....	1	301TEE050
79	SCREW.....	6	75AA1
80	BEARING HOUSING .....	1	301TEE006
81	SCREW.....	6	655EF050
82	GASKET .....	2	25C1945
83	BEARING HOUSING .....	1	3PE366
84	OIL SEAL .....	1	60G63
85	SCREW.....	6	655EF050
86	BEARING .....	2	12BA64
134	KEY .....	1	35B72



Order by Part Number and Description. Reference Numbers are shown for your convenience only.

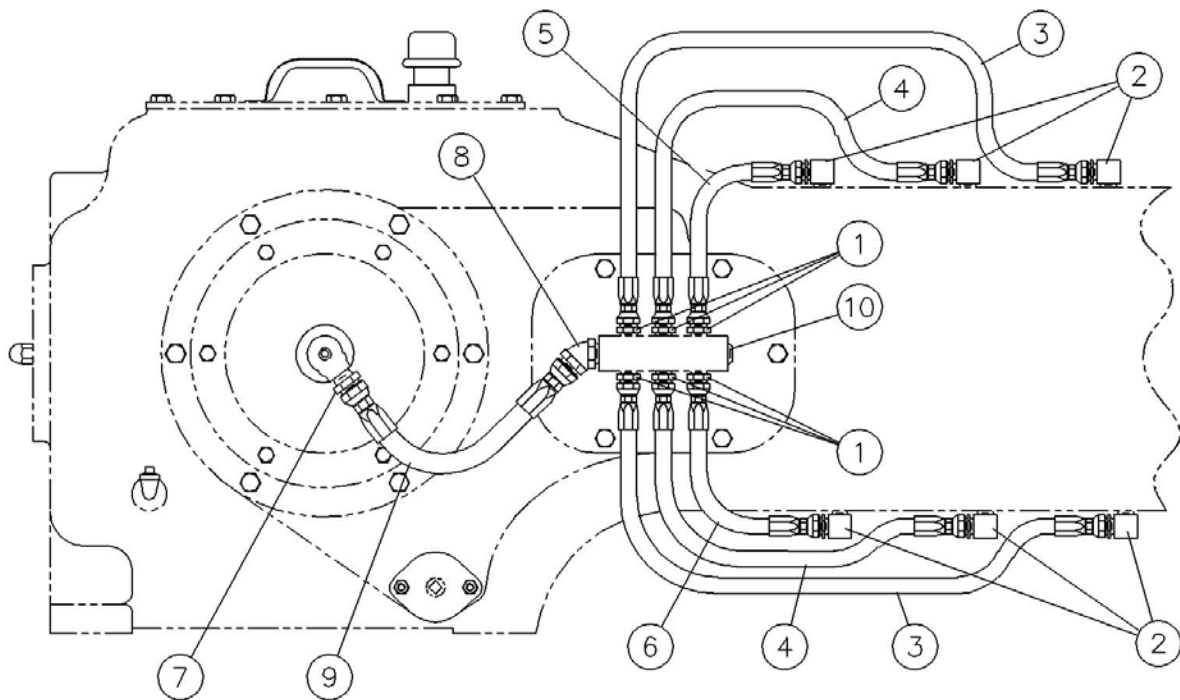


(Ref. Drawing No. 302TEE810)

### CONNECTING ROD

Ref. No.	Description	Qty.	Part No.
1	CONNECTING ROD (Includes the next 4 items).....	1	PE417
2	BUSHING, Eccentric .....	1	PE421
3	BUSHING, Crosshead Pin .....	2	PE229
4	PLUG.....	1	64AC2
5	LOCK SCREW .....	1	75LM162N

Order by Part Number and Description. Reference Numbers are shown for your convenience only.

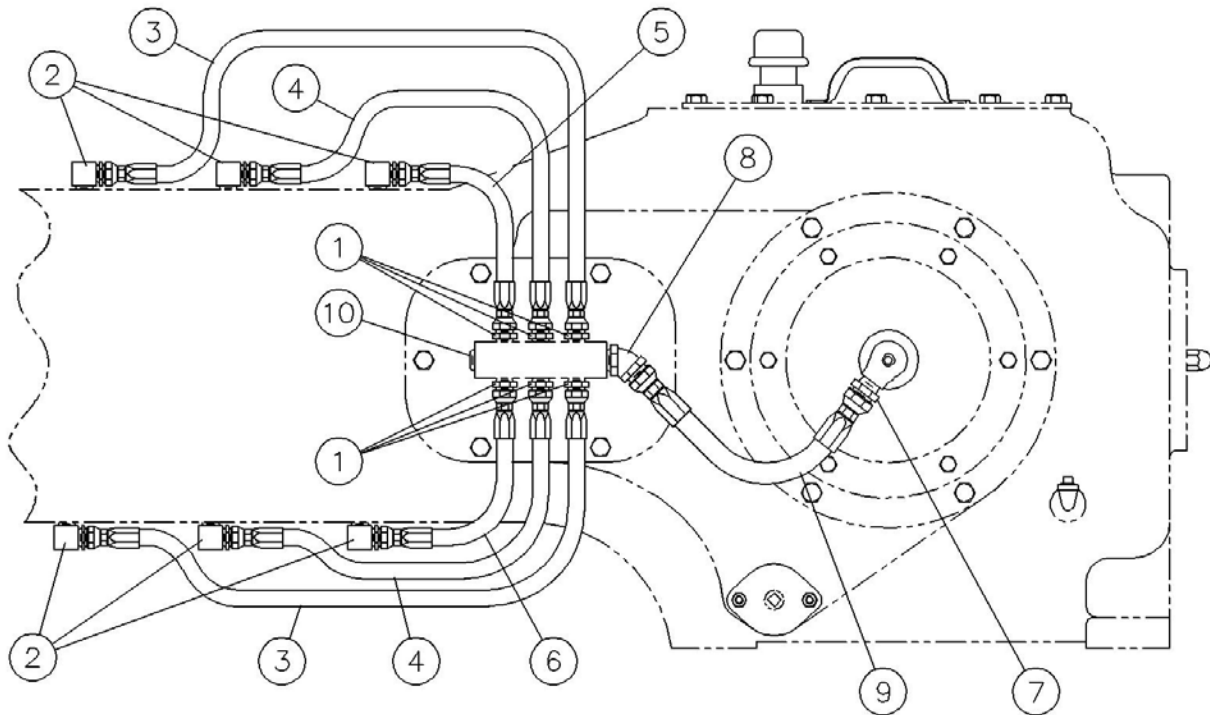


(Ref. Drawing No. 303THE810)

**CROSSHEAD LUBRICATION PIPING  
SWIVEL MOUNTED IN THE RIGHT HAND SIDE**

Ref No.	Description	Qty.	Part No.
1	ADAPTOR .....	6	29Z207
2	ADAPTOR .....	6	29Z242
3	HOSE ASSEMBLY .....	2	1000T29
4	HOSE ASSEMBLY .....	2	301TEE127
5	HOSE ASSEMBLY .....	1	1000T09
6	HOSE ASSEMBLY .....	1	30031008
7	ADAPTOR .....	1	29Z212
8	ADAPTOR .....	1	29Z227
9	HOSE ASSEMBLY .....	1	1001T22
10	PLUG.....	1	64B3

Order by Part Number and Description. Reference Numbers are shown for your convenience only.

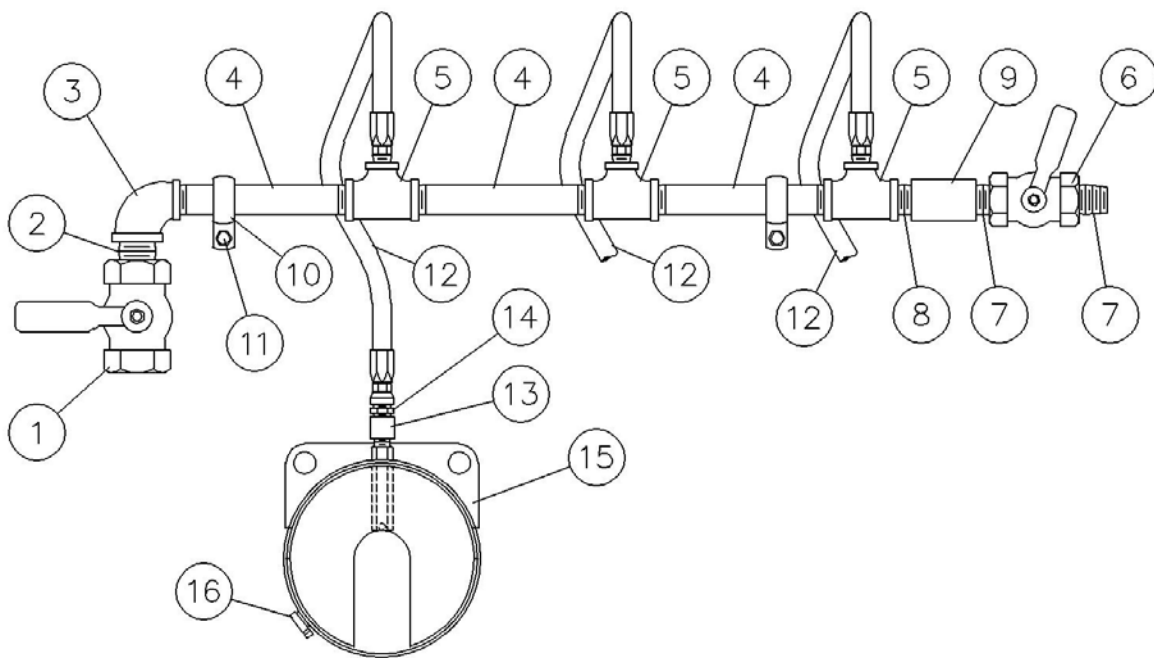


(Ref. Drawing No. 304THE810)

**CROSSHEAD LUBRICATION PIPING  
SWIVEL MOUNTED IN THE LEFT HAND SIDE**

Ref No.	Description	Qty.	Part No.
1	ADAPTOR .....	6	29Z207
2	ADAPTOR .....	6	29Z242
3	HOSE ASSEMBLY .....	2	1000T29
4	HOSE ASSEMBLY .....	2	301TEE127
5	HOSE ASSEMBLY .....	1	1000T09
6	HOSE ASSEMBLY .....	1	30031008
7	ADAPTOR .....	1	29Z212
8	ADAPTOR .....	1	29Z227
9	HOSE ASSEMBLY .....	1	1001T22
10	PLUG.....	1	64B3

Order by Part Number and Description. Reference Numbers are shown for your convenience only.

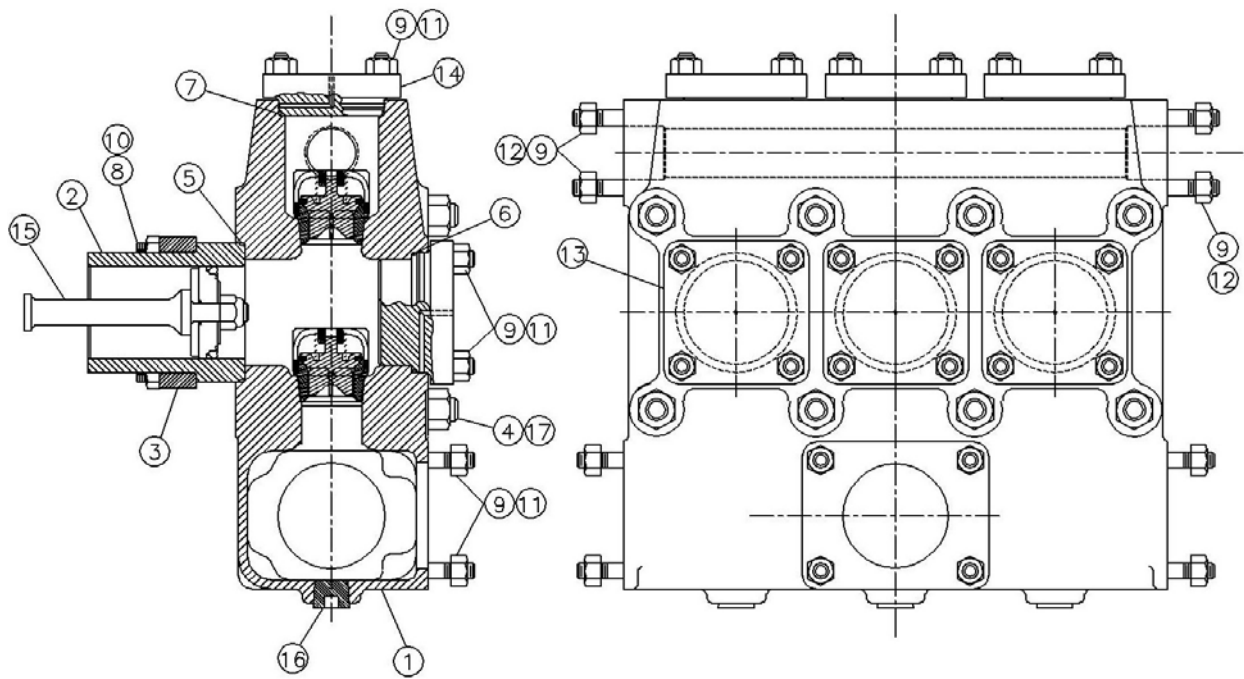


(Ref. Drawing No. 305THE810)

### ROD WASH SYSTEM

Ref. No.	Description	Qty.	Part No.
1	BALL VALVE .....	1	90AR299
2	PIPE NIPPLE .....	1	63H25
3	ELBOW .....	1	64S5
4	PIPE NIPPLE .....	3	63G15
5	TEE.....	3	64P39
6	BALL VALVE .....	1	90A35
7	PIPE NIPPLE .....	2	63G1
8	PIPE NIPPLE .....	1	63G2
9	COUPLING.....	1	64AB3
10	CLAMP .....	2	98H4
11	SCREW .....	2	655EC020
12	HOSE ASSEMBLY .....	3	29R32
13	HOSE ADAPTER .....	3	29Q7
14	BUSHING .....	3	64E2
15	BAFFLE .....	3	300TEE840
16	HOSE CLAMP .....	6	29B46

Order by Part Number and Description. Reference Numbers are shown for your convenience only.



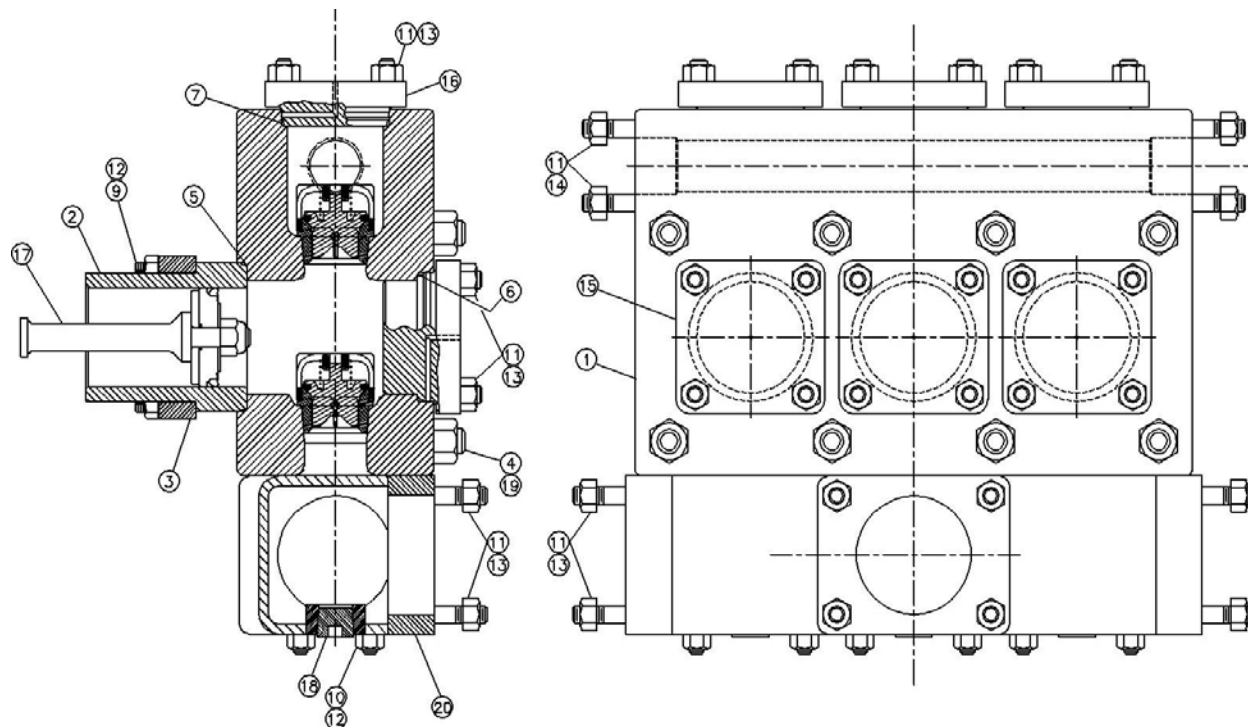
(Ref. Drawing No. 318TEE810)

See page 13 for Flange Groups

### FLUID CYLINDER ASSEMBLY – CAST NODULAR IRON

Ref. No.	Name of Part	Qty.	4.00"	4.50"	5.00"	5.50"
			304TEE2039 Part No.	303TEE2039 Part No.	301TEE2039 Part No.	302TEE2039 Part No.
1	FLUID CYLINDER .....	1	300TEE029	300TEE029	300TEE029	300TEE029
2	FLUID LINER – CHROME... FLUID LINER – CERAMIC.. SLEEVE (Optional).....	3	306TEE456	302TEE456	301TEE456	300TEE456
3	LINER CLAMP .....	3	300TEE455	300TEE455	300TEE455	300TEE455
4	STUD .....	8	300TEE110	300TEE110	300TEE110	300TEE110
5	SEAL .....	3	300TEE316	300TEE316	300TEE316	300TEE316
6	SEAL .....	3	301TEE316	301TEE316	301TEE316	301TEE316
7	SEAL .....	3	302TEE316	302TEE316	302TEE316	302TEE316
8	STUD .....	12	303TEE110	303TEE110	303TEE110	303TEE110
9	NUT .....	44	50B33	50B33	50B33	50B33
10	NUT .....	12	50B32	50B32	50B32	50B32
11	STUD .....	36	301TEE110	301TEE110	301TEE110	301TEE110
12	STUD .....	8	302TEE110	302TEE110	302TEE110	302TEE110
13	FLUID VALVE COVER.....	3	300TEE147	300TEE147	300TEE147	300TEE147
14	FLUID VALVE COVER.....	3	301TEE147	301TEE147	301TEE147	301TEE147
15	ROD GROUP.....	3	303TEE4043	301TEE4043	300TEE4043	302TEE4043
16	PLUG .....	3	64B78G	64B78G	64B78G	64B78G
17	HEX NUT .....	8	50T15	50T15	50T15	50T15

Order by Part Number and Description. Reference Numbers are shown for your convenience only.



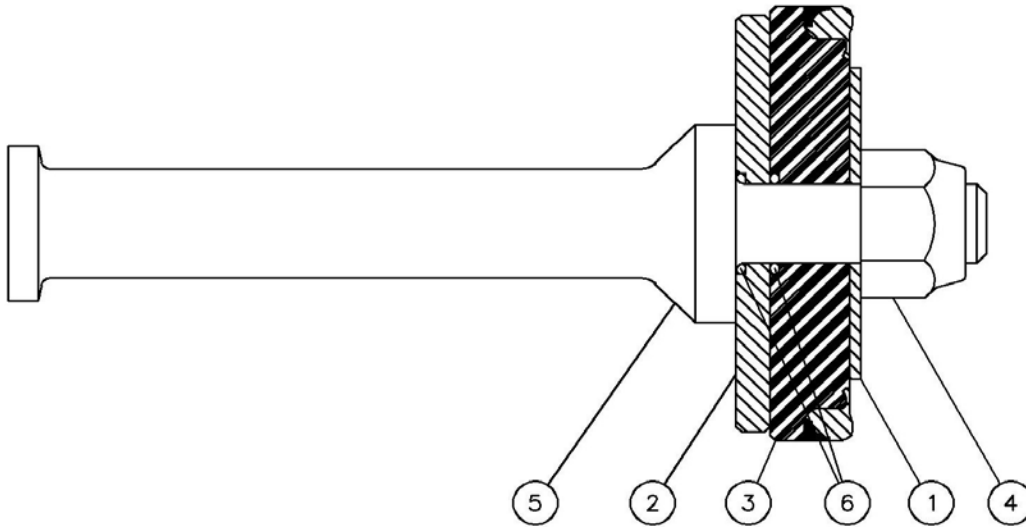
\*Applies only to Serial Numbers lower than Q004740

(Ref. Drawing No. 320TEE810)

### FLUID CYLINDER ASSEMBLY – BLOCK STEEL\*

Ref. No.	Name of Part	Qty.	4.50"	5.00"	5.50"
			300TEE2039 Part No.	300TEE2039 Part No.	300TEE2039 Part No.
1	FLUID CYLINDER.....	1	301TEE029	301TEE029	301TEE029
2	FLUID LINER – CHROME .....	3	302TEE456	301TEE456	300TEE456
3	LINER CLAMP .....	3	300TEE455	300TEE455	300TEE455
4	STUD.....	8	300TEE110	300TEE110	300TEE110
5	SEAL .....	3	300TEE316	300TEE316	300TEE316
6	SEAL .....	3	301TEE316	301TEE316	301TEE316
7	SEAL .....	3	302TEE316	302TEE316	302TEE316
9	STUD .....	12	303TEE110	303TEE110	303TEE110
10	STUD.....	12	304TEE110	304TEE110	304TEE110
11	NUT .....	44	50B33	50B33	50B33
12	NUT .....	24	50B32	50B32	50B32
13	STUD .....	36	301TEE110	301TEE110	301TEE110
14	STUD .....	8	302TEE110	302TEE110	302TEE110
15	FLUID VALVE COVER.....	3	300TEE147	300TEE147	300TEE147
16	FLUID VALVE COVER.....	3	301TEE147	301TEE147	301TEE147
17	ROD GROUP .....	1	301TEE4043	300TEE4043	302TEE4043
18	PLUG .....	3	64B78G	64B78G	64B78G
19	HEX NUT.....	8	50T15	50T15	50T15
20	SUCTION MANIFOLD.....	1	302TEE069	302TEE069	302TEE069

Order by Part Number and Description. Reference Numbers are shown for your convenience only.



(Ref. Drawing No. 319TEE810)

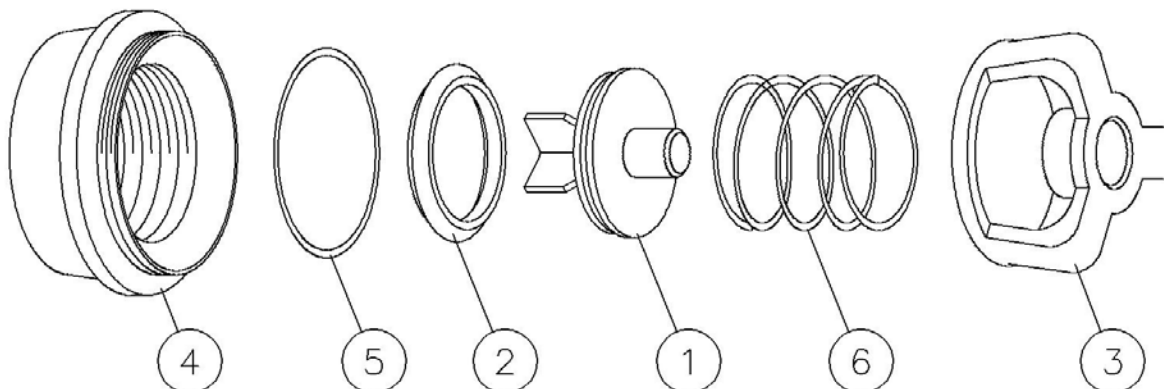
### PISTON ROD ASSEMBLY

Ref. No.	Name of Part	Qty.	4.00" Part No.	4.50" Part No.	5.00" Part No.	5.50" Part No.
1	PISTON WASHER .....	3	302TEE097	301TRH247	300TEE097	301TEE097
2	PLATE .....	3	302TEE247	300TRH247	300TEE247	301TEE247
3	FLUID PISTON .....	3	302TEE350	300TRH350	301TEE350	300TEE350
4	NUT. ....	3	50V3	50V3	50V3	50V3
5	PISTON ROD (Includes Item 6).....	3	200PEE060	200PEE060	200PEE060	200PEE060
6	O-RING .....	6	25AM26	25AM26	25AM26	25AM26

The above parts can also be ordered in groups as follows:

ROD GROUP (Includes Items 1 thru 6) .....	3	303TEE4043	301TEE4043	300TEE4043	302TEE4043
PISTON GROUP (Includes Items 1, 2, 3 and 6).....	3	306TEE4056	300TEE4056	301TEE4056	302TEE4056
PISTON GROUP (Includes Items 3 and 6).....	3	307TEE4056	303TEE4056	304TEE4056	305TEE4056

Order by Part Number and Description. Reference Numbers are shown for your convenience only.



**SUCTION AND DISCHARGE VALVES  
STAINLESS STEEL - ABRASION RESISTANT**

Ref. No.	Name of Part	Qty.	Part No.	Part No.	Part No.	Part No.
			With 20# Spring	With 25# Spring	With 30# Spring	High Flow
	FLUID VALVE ASSEMBLY (Includes Items 1 thru 6)	6	300TEE2055	302TEE2055	303TEE2055	304TEE2055
1	FLUID VALVE.....	6	300TEE482	300TEE482	300TEE482	2116895
2	INSERT.....	6	300TEE106	300TEE106	300TEE106	2116894
3	CAGE.....	6	300TEE054	300TEE054	300TEE054	2117759
4	SEAT .....	6	300TEE039	300TEE039	300TEE039	2118112
5	O-RING.....	6	180549	180549	180549	2116893
6	SPRING .....	6	78W86	78W87	78W88	2010608

**VALVE PULLER EQUIPMENT  
FOR THE 300, 302 & 303TEE2055 VALVE**

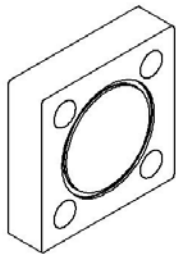
Name of Part	Qty.	Part No.
VALVE SEAT PULLER .....	1	TEE75248
VALVE CAGE WRENCH .....	1	200TEE933

**FOR THE 304TEE2055 FULL OPEN VALVE**

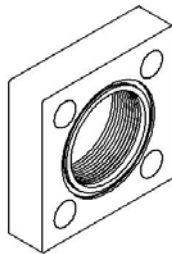
Name of Part	Qty.	Part No.
VALVE SEAT PULLER .....	1	TEE73494
SEAT PULLER HEAD .....	1	200PEE219
VALVE CAGE WRENCH .....	1	16AUX206



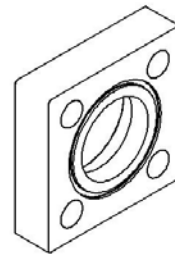
Order by Part Number and Description. Reference Numbers are shown for your convenience only.



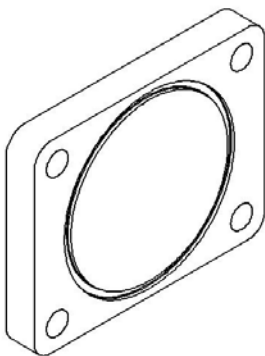
300THE073  
3" BLIND  
DISCHARGE FLANGE



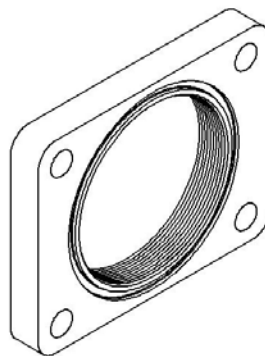
301THE073  
3" NPT THREADED  
DISCHARGE FLANGE



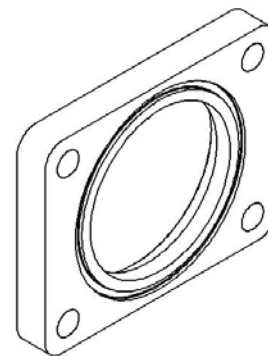
302THE073  
3" SLIP-ON  
DISCHARGE FLANGE



303THE073  
6" BLIND  
SUCTION FLANGE



304THE073  
6" NPT THREADED  
SUCTION FLANGE



305THE073  
6" SLIP-ON  
SUCTION FLANGE

### FLANGE GROUPS

Ref. No.	Name of Part	Qty.	Part No.	Part No.
			Slip-on Flanges	Threaded Flanges
	FLANGE GROUP			
	(Includes Items 1 thru 6) .....	1	300THE4038	301THE4038
1	O-RING (Suction) .....	3	25BC227	25BC227
2	O-RING (Discharge) .....	2	901SH05-240	901SH05-240
3	FLANGE - 6" (Suction) .....	1	305THE073	304THE073
4	FLANGE - 6" BLIND (Suction) .....	2	303THE073	303THE073
5	FLANGE - 3" (Discharge) .....	1	302THE073	301THE073
6	FLANGE - 3" BLIND (Discharge) .....	1	300THE073	300THE073

## GARDNER DENVER PUMP UNIT RECORD

The following unit identification plate is provided as a convenience to you, our valued Gardner Denver customer. Please take the time to copy all the information from the actual nameplate on your unit. The model number, date manufactured and serial number will be required when contacting the company or your distributor for information or replacement parts.

DANGER-READ INSTRUCTION MANUAL BEFORE MOVING OR OPERATING UNIT						
MODEL	<input style="width: 95%;" type="text"/>	DATE MFG	<input style="width: 95%;" type="text"/>	SERIAL NO.	<input style="width: 95%;" type="text"/>	
ID NO.	<input style="width: 95%;" type="text"/>	MAX TEMP	<input style="width: 95%;" type="text"/>	C/CASE OIL CAP. GAL	<input style="width: 95%;" type="text"/>	
SERVICE	RATED MAX INPUT BHP	RATED MAX INPUT RPM	RATED MAX PUMP RPM	DISCHARGE MAX PSI W.P. OF FLUID CYL.	SUCTION MAX PSI W.P. OF FLUID CYL.	MAX INPUT RPM AT MAX PRESSURE
CONTINUOUS	<input style="width: 95%;" type="text"/>	<input style="width: 95%;" type="text"/>	<input style="width: 95%;" type="text"/>	<input style="width: 95%;" type="text"/>	<input style="width: 95%;" type="text"/>	<input style="width: 95%;" type="text"/>
INTERMITTENT	<input style="width: 95%;" type="text"/>	<input style="width: 95%;" type="text"/>	<input style="width: 95%;" type="text"/>	<input style="width: 95%;" type="text"/>	<input style="width: 95%;" type="text"/>	<input style="width: 95%;" type="text"/>
DISPLACEMENT & PRESSURE AT RATED RPM, SEE O-M MANUAL FOR ADDITIONAL SPECIFICATIONS						
SIZE	<input style="width: 95%;" type="text"/>	<input style="width: 95%;" type="text"/>	<input style="width: 95%;" type="text"/>	<input style="width: 95%;" type="text"/>	<input style="width: 95%;" type="text"/>	<input style="width: 95%;" type="text"/>
GPM	<input style="width: 95%;" type="text"/>	<input style="width: 95%;" type="text"/>	<input style="width: 95%;" type="text"/>	<input style="width: 95%;" type="text"/>	<input style="width: 95%;" type="text"/>	<input style="width: 95%;" type="text"/>
PSI	<input style="width: 95%;" type="text"/>	<input style="width: 95%;" type="text"/>	<input style="width: 95%;" type="text"/>	<input style="width: 95%;" type="text"/>	<input style="width: 95%;" type="text"/>	<input style="width: 95%;" type="text"/>
INTERMITTENT DUTY MAXIMUM PRESSURE, SEE O-M MANUAL FOR ADDITIONAL SPECIFICATIONS						
PSI	<input style="width: 95%;" type="text"/>	<input style="width: 95%;" type="text"/>	<input style="width: 95%;" type="text"/>	<input style="width: 95%;" type="text"/>	<input style="width: 95%;" type="text"/>	<input style="width: 95%;" type="text"/>
<b>Gardner Denver</b>			PURCHASER ID NO.		<input style="width: 95%;" type="text"/>	
200DPA496	Gardner Denver, Inc. Quincy, Illinois			MADE IN USA		
GIVE MODEL, ID NO. AND SERIAL NO. WHEN ORDERING REPAIR PARTS OR SERVICE						

# **Gardner** --- **Denver**

Specifications subject to change without notice.

Copyright © 2008 Gardner Denver, Inc. DJC Litho in U.S.A.

<http://www.gardnerdenver.com> [pumps@gardnerdenver.com](mailto:pumps@gardnerdenver.com)



For additional information contact your local distributor or

Gardner Denver Fluid Transfer Division,  
1800 Gardner Expressway, Quincy, Illinois 62301  
Customer Service Department Telephone:  
(800) 682-9868 FAX: (217) 223-1581

For Domestic Parts Information Contact  
Gardner Denver Fluid Transfer Division  
2200 South Prospect, Oklahoma City, OK. 73129  
Telephone: (405) 677-5736 FAX: (405) 677-5807